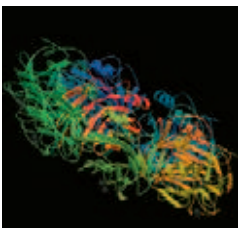


# CRP



## 2-minute test to indicate bacterial or viral cause of infection

NycoCard® CRP measures C-reactive protein (CRP), an acute phase protein that increases rapidly after onset of infection. Importantly from a diagnostic point of view, high readings are usually seen in bacterial infection, but only low to moderate levels in viral.

Thus, determining CRP can support the clinical diagnosis of an infection, and so avoid unnecessary use of antibiotics if the test result indicates a viral aetiology.

In addition, CRP levels reflect inflammatory activity during treatment, remission and recurrence of the disease. With follow-up CRP testing, the course of the illness and the efficacy of any antibiotic can therefore be monitored.

**NycoCard®**

**CRP**

*Results at the Point of Care*



Requires:

- only a tiny drop of whole blood and 2 minutes' test time

Provides:

- immediate results for follow up during patient consultation
- accurate results comparable to hospital laboratory assays

Contributes to:

- more rapid induction of treatment, fewer hospital admissions
- more appropriate use of antibiotics with healthcare cost savings

PDB 1GNH Human C-Reactive Protein Shrive, A. K., Cheatham, G. M., Holden, D., Myles, D. A., Turnell, W. G., Volanakis, J. E., Pepys, M. B., Bloomer, A. C., Greenhough, T. J.: Three dimensional structure of human C-reactive protein. Nat Struct Biol 3 pp. 346 (1996) <http://www.pdb.org/>